

**Section C: Long Answer Questions (10 marks)**

Questions 16 and 17 carry 3 marks each. Q18 carries 4 marks. Show your workings clearly as marks may be awarded. Write your answer in the space provided.

16. A jug and 5 pails were completely filled with water. The capacity of a jug was 2 litres. The capacity of a pail was 6 litres. Mr Lim poured all the water from the jug and the 5 pails into a large container. How many litres of water were there in the large container?

Answer : \_\_\_\_\_ (3m)

17. David, Bentley and Triston have 410 stamps altogether.  
Triston has 5 times as many stamps as Bentley.  
Bentley has 25 fewer stamps than David.  
How many stamps does Bentley have?

Answer : \_\_\_\_\_ (3m)



**RIVER VALLEY PRIMARY SCHOOL  
WEIGHTED ASSESSMENT 3  
2019  
MATHEMATICS  
PRIMARY THREE**

Name : \_\_\_\_\_

Date : **29 August 2019**

Class : Primary 3 \_\_\_\_\_

Mark : \_\_\_\_\_ / 40

Duration : **1 hour**

Parent's Signature : \_\_\_\_\_

**Section A: Multiple Choice Questions (10 marks)**

Questions 1 to 5 carry 2 marks each.

For each question, four options are given. One of them is the correct answer. Make your choice (1, 2, 3 or 4) and write its number (1, 2, 3 or 4) in the brackets provided.

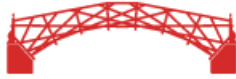
1. The capacity of a bottle of mineral water in the school canteen is likely to be

\_\_\_\_\_

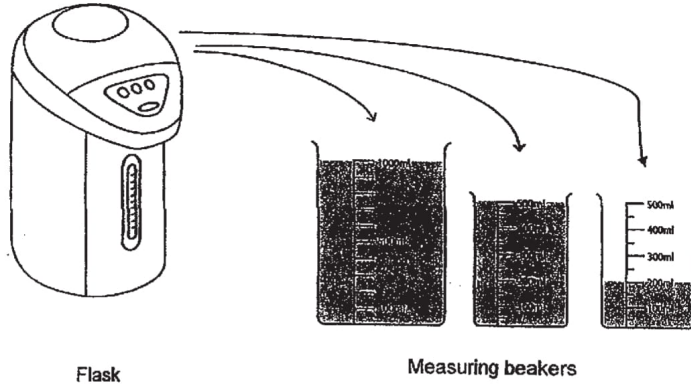
- (1) 80 ml
- (2) 800 ml
- (3) 80 l
- (4) 800 l

2. When a number is divided by 8, the quotient and the remainder are the same.  
Which of the following is the number?

- (1) 62
- (2) 63
- (3) 64
- (4) 65



3. The flask is completely filled with water at first. All the water is then poured into 3 empty measuring beakers as shown below. What is the capacity of the flask?



- (1) 170 ml  
(2) 1 l 70 ml  
(3) 1700 ml  
(4) 1700 l

4. Arrange the fractions in order. Begin with the greatest.

$$\frac{1}{2}, \frac{5}{6}, \frac{2}{3}$$

- (1)  $\frac{2}{3}, \frac{5}{6}, \frac{1}{2}$   
(2)  $\frac{2}{3}, \frac{1}{2}, \frac{5}{6}$   
(3)  $\frac{5}{6}, \frac{2}{3}, \frac{1}{2}$   
(4)  $\frac{5}{6}, \frac{1}{2}, \frac{2}{3}$



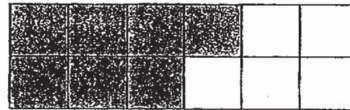
5. Ali has 50 more stamps than Ben and 80 more stamps than Choon Huat. Dinesh has 30 more stamps than Ben. Who has the least number of stamps?

- (1) Ali
- (2) Ben
- (3) Choon Huat
- (4) Dinesh

**Section B: Short Answer Questions (20 marks)**

Questions 6 to 15 carry 2 marks each. Show your workings clearly and write your answers in the spaces provided. For questions which require units, give your answers in the units stated.

6. What fraction of the figure below is shaded?



Answer: \_\_\_\_\_

7. Look at the equivalent fractions below.  
Fill in the missing denominator and numerator.

$$\frac{1}{\boxed{\text{(a)}}} = \frac{2}{8} = \frac{\boxed{\text{(b)}}}{24}$$

Answer: (a) \_\_\_\_\_

(b) \_\_\_\_\_



8. What is the value of  $\frac{1}{3} + \frac{1}{6}$ ? Give your answer in its simplest form.

Answer: \_\_\_\_\_

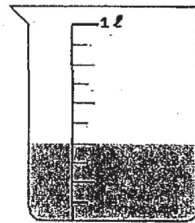
---

9. Find the difference between  $\frac{5}{12}$  and  $\frac{3}{4}$   
Give your answer in its simplest form.

Answer: \_\_\_\_\_

---

10. What is the volume of the water in the jug below?



Answer: \_\_\_\_\_ ml

---



11.  $3\text{ l } 45\text{ ml} = \underline{\hspace{2cm}}\text{ ml}$

Answer:  $\underline{\hspace{2cm}}\text{ ml}$

---

12. Gopal's family drinks 8 litres of water every day. How many litres of water does his family drink in 7 days?

Answer:  $\underline{\hspace{2cm}}\text{ l}$

---

13. The capacity of a container is 8200 ml. There is 5375 ml of water in the container. How much more water must be added to fill the container completely? Give your answer in l and ml.

Answer:  $\underline{\hspace{1cm}}\text{ l } \underline{\hspace{1cm}}\text{ ml}$

---



14. Xiao Ming collected 182 picture cards.  
He collected 7 times as many picture cards as Edwin.  
How many picture cards did Edwin collect?

Answer: \_\_\_\_\_

---

15. Ron had some marbles.  
He gave all his marbles equally to his 3 friends.  
Each friend received 14 marbles.  
How many marbles did Ron have?

Answer: \_\_\_\_\_

---



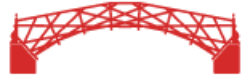
18. Simon did a Math Quiz which consisted of 24 questions.  
The number of questions he answered correctly was 2 times as many as the number of questions he answered incorrectly.
- a) How many questions did Simon answer correctly?
  - b) For each question answered correctly, he was awarded 6 points.  
How many points did Simon score?

Answer : (a) \_\_\_\_\_ (2m)

(b) \_\_\_\_\_ (2m)

---

~~ End of paper ~~



**Dr.Kenny Education**



SCHOOL : RIVER VALLEY PRIMARY SCHOOL

LEVEL : PRIMARY 3

SUBJECT : MATH

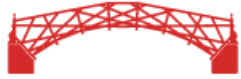
TERM : 2019 CA2

BOOKLET A

Q 1	Q2	Q3	Q4	Q5
2	2	3	3	3

BOOKLET B

Q6)	$\frac{7}{12}$
Q7)	$\frac{1 \times 2}{4 \times 2} = \frac{2 \times 3}{8 \times 3} = \frac{6}{24}$ Ans : a)4    b)6
Q8)	$\frac{1 \times 2}{3 \times 2} + \frac{1}{6} = \frac{3}{6}$ $\frac{3 \div 3}{6 \div 3} = \frac{1}{2}$
Q9)	$\frac{3}{4} \times 3 = \frac{9}{12}$ $= \frac{9}{12} - \frac{5}{12}$ $= \frac{4}{12} \div 4 = \frac{1}{3}$
Q10)	400ml
Q	3L 45ml = 3045ml
Q12)	7 x 8 = 56
Q13)	8200 - 5375 = 2825 → 2l 825ml
Q14)	182 ÷ 7 = 26
Q15)	14 x 3 = 42
Q16)	5 x 6 = 30 30 + 2 = 32l



Q17)	$410 - 25 = 385$ $385 \div 7 = 55$
Q18)	a) $24 \div 3 = 8$ $8 \times 2 = 16$ b) $16 \times 6 = 96$